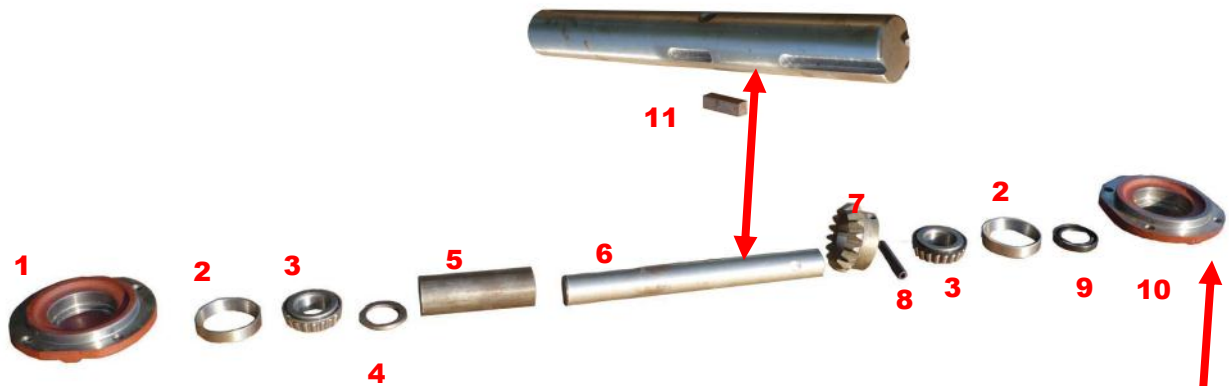


Left or Right Spinner 215 Gear Box Parts



ITEM #	PART#	DESCRIPTION
1	GB-051904	Bottom Cap
2	GB-150102	Race
3	GB-150094	Cone Bearing, Large
4	GB-410571	Washer
5	GB-450338	Pipe Spacer
6	GB-222125	Shaft
7	GB-100610	Gear
8	GB-350009	Roll Pin
9	GB-300004	Seal
10	GB-882076	Top Cap with Zerk
11	GB-600056	Key
12	GB-00125	Housing, Left & Right
16	GB-390096	Gasket.003, Clear
17	GB-390005	Gasket.015, White

10 Flipped over



16 & 17
See Page 5



Assembling Left or Right Spinner Gear Box Motors

These photos show the order & method for rebuilding a gear box. For clarity, the housing is NOT shown. Steps 1 –10 are performed inside GB-00125



Step 1

Drop GB-150102 Race into GB-051904 bottom cap. It should seat firmly.—may need to be tapped lightly with hammer.



Step 2

Place GB-150094 cone bearing—small end down— into bottom cap.



Step 3

Place GB-300004 seal on top of bearing

Assembling Left and Right Spinner Gear Box Motors

Step 4

Place GB-45038 pipe spacer on top of washer.



Step 5

Slide GB-222125 shaft into pipe spacer.



Step 6

Place GB-600056 key into slot in side of shaft.

Assembling Left and Right Spinner Gear Box Motors

Step 7

Slide gear down shaft and insert GB-350009 roll pin thru hole inside of cone into hole in shaft.



Step 8

Slide GB-150094 cone bearing—small side up—down shaft to rest on gear.



Step 9

Slide GB-150102 race down to rest on bearing.



Step 10

Insert GB-300004 seal into top cap.
Flip cap over so that zerk is on top and slide cap down shaft.



The GB-350009 roll pin will be hammered through the gear and shaft so that it



Finished assembly shown inside gear box housing GB-00125



Assembled box shown. Bottom cap is underneath housing, shaft runs through center of housing, top cap sits on top of housing



Important!



Be sure to count the gaskets, type and number. You will need to replace these exactly when you reassemble your gear box.

It is a good idea to have extra gaskets on hand. Sometimes you need to add them when reassembling your box.