

A Guide to Checking Spinner Speed

Danger!

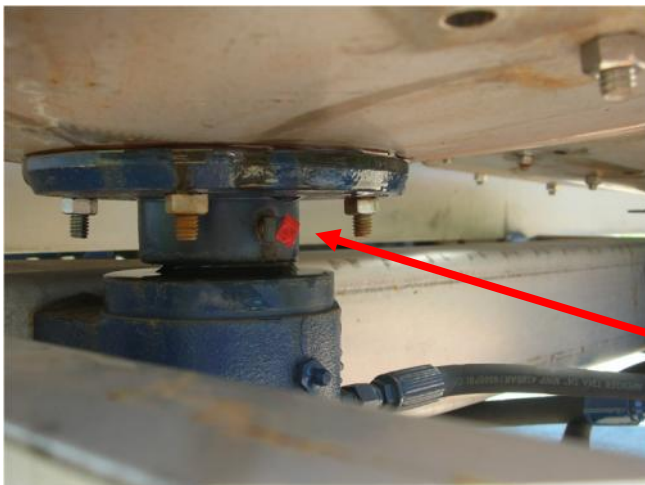
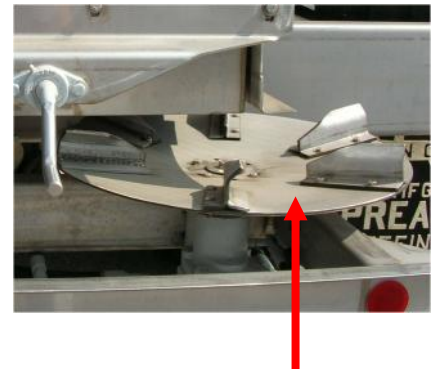
- Checking the spinner speed is an EXTREMELY dangerous procedure even if caution is used.
- Personal injury or death can occur if you come in contact with the spinning blades or dishes.
- Do not wear loose clothing or rings.
- Wear eye protection
- Do not allow anyone to stand within 100 feet while you are setting the spinners.

Non-Contact Tachometer – SM-11765T57
available at Newton Crouch Inc.



Clean up before you begin

Product can build up on conveyor, dishes & blades.



Clean the center of the motor shaft so the tachometer will have a good contact point.

Place the readable tape on hub bolt

- ◆ Crank the vehicle (truck or tractor) and engage the PTO.
- ◆ Engage the drive wheel (if applicable) and increase the revolutions of the vehicle motor to field operating speed (normally 2000 RPM or greater)
- ◆ In cold weather operate the system for 10—15 minutes idle before starting.
- ◆ Operate power unit safely and install safety devices prior to using hydraulics.
- ◆ Read the actual spinner speed shown on the digital screen of the tachometer. Move up and down to read.
- ◆ Adjust the flow control as necessary and recheck.
- ◆ Disengage the PTO. (if applicable)
- ◆ Check both the right and the left spinners.



NCI keeps records for each spreader or sprayer manufactured

- These records are stored by serial number and will have complete information on your equipment as built.
- It will not reflect any changes made by the purchaser or other alterations.
- There may be differences in replacement part numbers due to technical improvements or changes in vendors / vendor supplies.

**Before you call NCI for technical assistance,
know the serial number from your equipment
located on the left side rail on the unit.**

1-800-241-1350