

# AUTOMATIC DEMAND PUMPS



## 2088 Series Automatic Demand Pumps

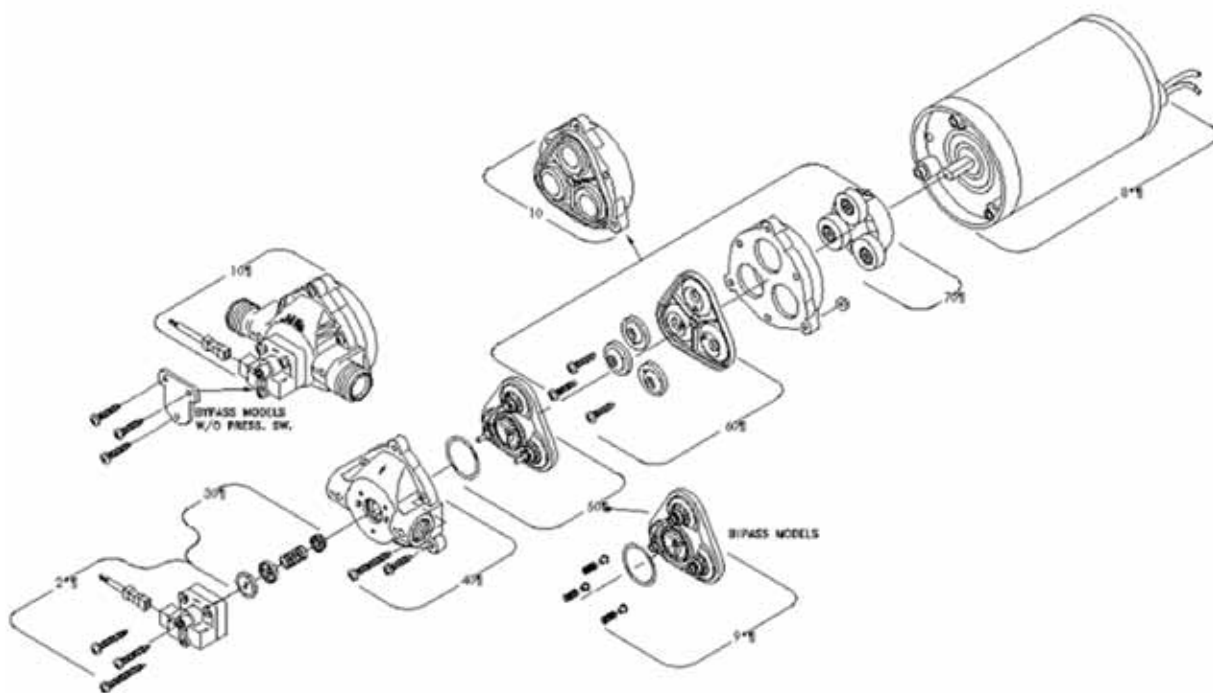
- Heavy duty spraying, spot spraying, mini bulk transfer, and fertilizer applications
- Self priming up to 12 feet
- Built in check valve rated up to 200 PSI

## 8000 Series Automatic Demand Pumps

- Heavy duty spraying & foam marking
- Self priming up to 8 feet
- Bypass options available with or without switch

## SHURflo Automatic Demand Pumps

| SHURflo 2088 Series Automatic Demand Pumps |               |     |                        |   |  |
|--|---------------|-----|------------------------|---|--|
| Part No.                                   | GPM           | PSI | Port Size              | Description   |  |
| SF-2088343135                              | 3.0 open flow | 45  | 1/2" 14 NA Straight PT | Standard pump, Viton valves, Santoprene diaphragm w/ demand switch  |  |
| SHURflo 8000 Series Automatic Demand Pumps |               |     |                        |   |  |
| Part No.                                   | GPM           | PSI | Port Size              | Description   |  |
| SF-8000541236                              | 1.0 open flow | 60  | 3/8" NPT               | Lawn & Garden Pump, for 25 gallon tank or less, Viton valves, Santoprene diaphragm w/ demand switch. 12 VDC |  |
| SF-8000543236                              | 1.8 open flow | 50  | 3/8" NPT               | Standard Pump, Viton valves, Santoprene diaphragm w/ demand switch. 12 VDC                                  |  |



### Shurflo 8000-543-236 Schematic

| Ref No. | Part No.   | Description               | Ref No. | Part No.   | Description                    |
|---------|------------|---------------------------|---------|------------|--------------------------------|
| 2       | SF-9437506 | Switch Assembly           | 7       | NA         | Drive Assembly                 |
| 3       | SF-9437405 | Check Valve Assembly      | 8       | SF-1111100 | Motor                          |
| 4       | SF-9437900 | Upper Housing             | 9       | NA         | Valve Assembly (Bypass)        |
| 5       | SF-9439005 | Valve Assembly (Standard) | 10      | SF-9438532 | Solid Diaphragm/Drive Assembly |
| 6       | NA         | Diaphragm                 |         |            |                                |

