

# HOW TO ADJUST CONVEYOR CHAIN

**EMPTY THE HOPPER before starting chain adjustment.**

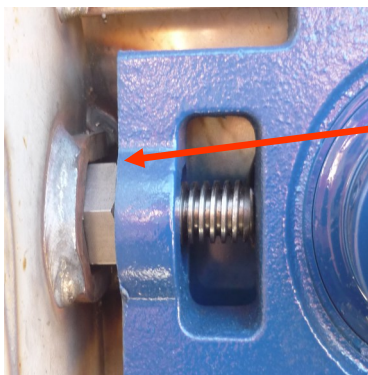
The weight of the product in the hopper will cause the chain to tension correctly only underneath the unit. This will possibly cause you to repeat the adjustment immediately when the unit has been emptied.



**Step 1:**  
Using a 1" wrench, loosen nut on take-up screw.

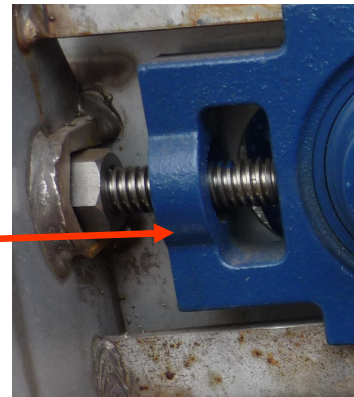


**Step 2:**  
Using a 1" socket will turn the screw to increase tension on front roller by moving it forward.



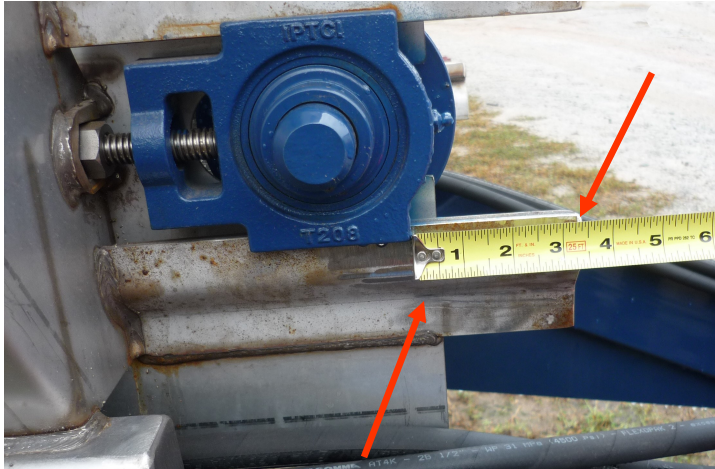
**Before**  
turning adjustment  
screw

**After**  
turning adjustment  
screw



**NEWTON  
CROUCH**

© 2023 Newton Crouch Co. Rev 6.26.2023 This information is the property of Newton Crouch Co. and is loaned confidentially to our customer for his sole use. It must not be used in any way detrimental to our interest or shared with outside parties. Technical Tips\Conveyor Chain Adjusting



This measurement **MUST** be equal on both sides of the unit!

Correctly tensioned bed chain may sag slightly to one side. This is acceptable.

**DO NOT** attempt to pull chain straight by inserting pin at an angle into chain or tightening on front roller unevenly. This will damage your conveyor!

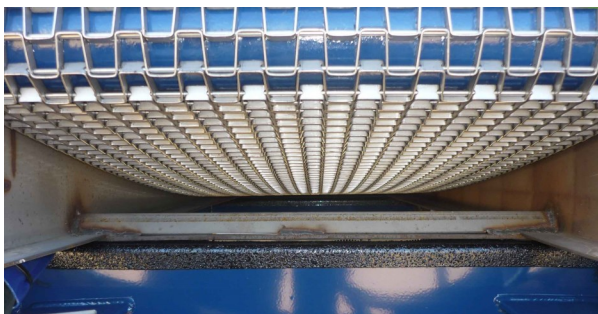


**Step 3:**  
Using a 1" wrench, tighten nut on take-up screw to secure front roller in correct position.



The conveyor will sag slightly but should not touch or drag across the top of the trailer cross members. Do not overtighten chain.

**Maximum Acceptable Sag**



**Too Tight**

